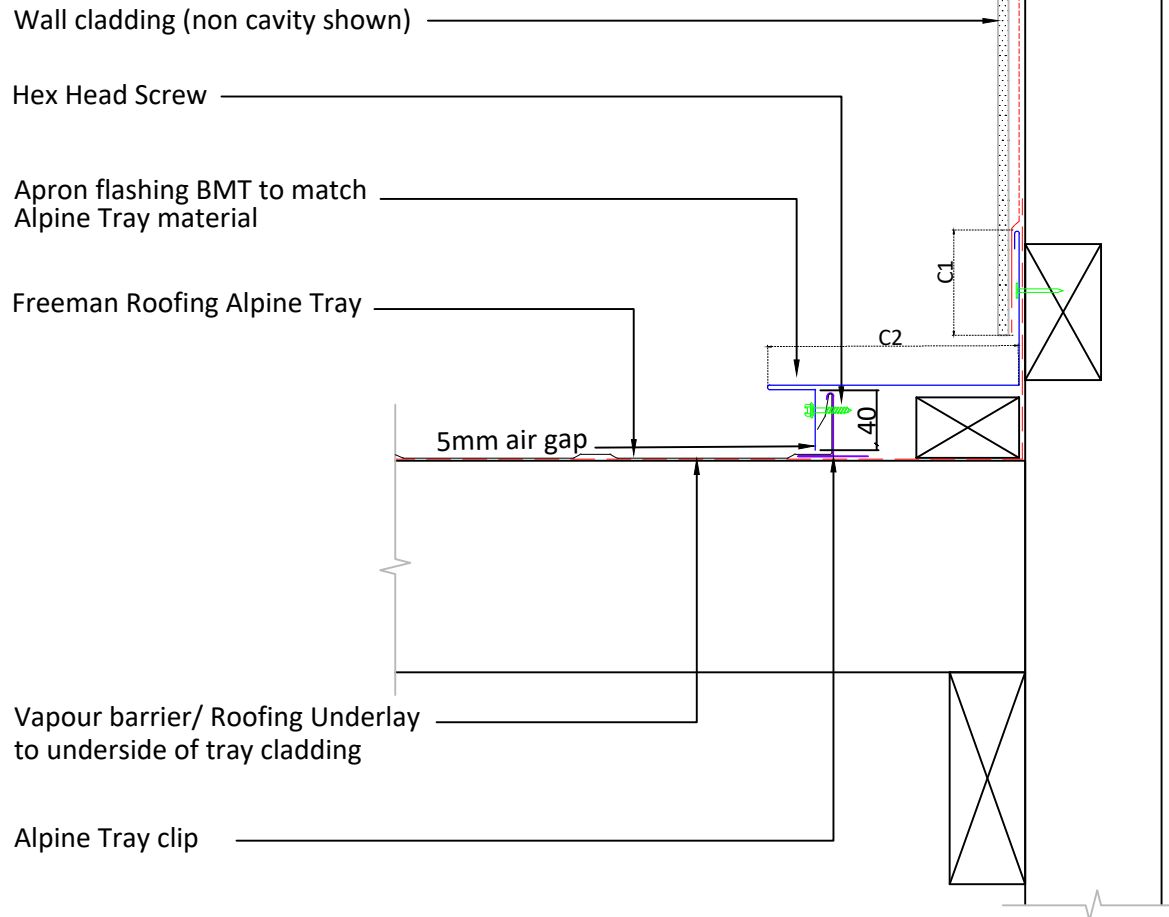


Freeman Roofing Alpine Tray	
0.4mm	Colorsteel® Maxam®
0.55mm	Colorsteel® Maxam®
0.4mm	Zincalume®
0.55mm	Zincalume®



Notes:
These details are required to be fixed to allow thermal movement .

Category A:

Low, Medium or High Wind Zones, all pitches
Very High and Extra High Wind Zones where the pitch is equal to or greater than 10°.

Category B:

Very High where the pitch is less than 8°, and
Extra High Wind Zones all pitches.

Category C:

SED Wind Zones up to 60 m/s all pitches.

Category D:

SED up to 68 m/s, all pitches.

Dimension	Category			
	A	B	C	D
C2	1 Rib	2 Ribs	2 Ribs	2+ undersoaker
C1 (Smooth)	50mm	75mm	75mm	75mm
C1 (Profiled)	75mm+ hem or 100mm	100mm+ hem or 125mm	125mm	125mm