

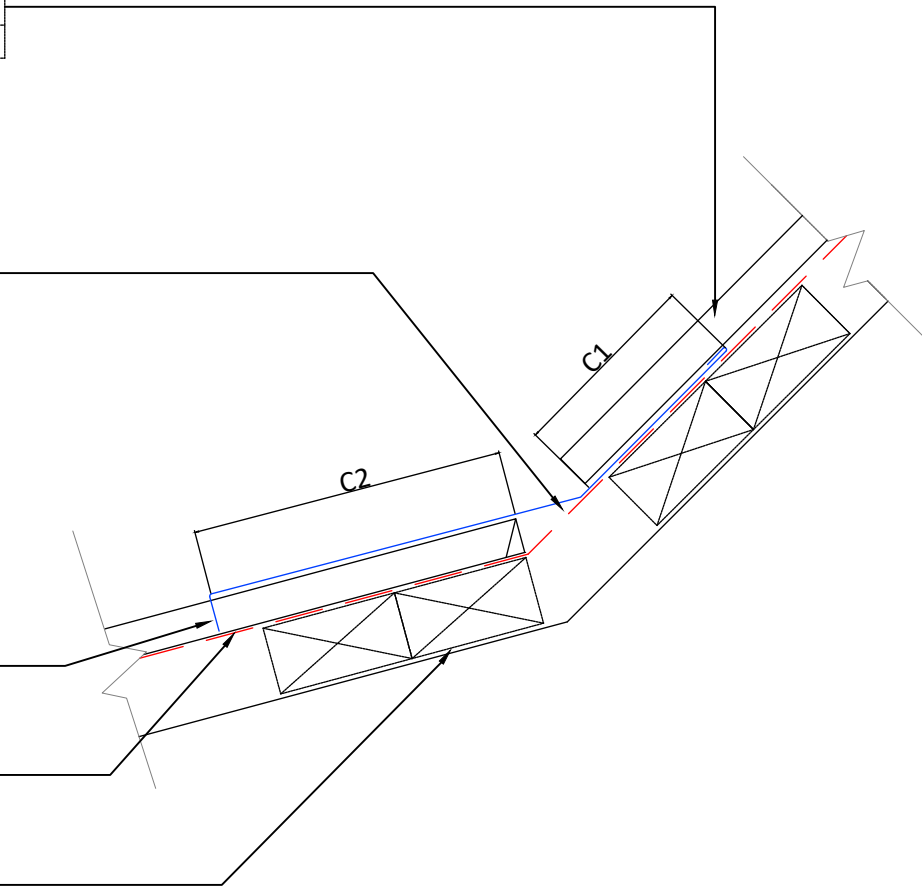
Freeman Roofing Five Rib	
0.4mm	Colorsteel® Maxam®
0.55mm	Colorsteel® Maxam®
0.4mm	Zincalume®
0.55mm	Zincalume®

Change of Pitch flashing to match Five Rib material

Notched Flashing

Roofing Underlay

Purlin



**Notes:**

These details are required to be fixed to allow thermal movement .

**Category A:**

Low, Medium or High Wind Zones, all pitches  
Very High and Extra High Wind Zones where the pitch is equal to or greater than 10°.

**Category B:**

Very High where the pitch is less than 8°, and  
Extra High Wind Zones all pitches.

**Category C:**

SED Wind Zones up to 60 m/s all pitches.

**Category D:**

SED up to 68 m/s, all pitches.

Dimension	Category			
	A	B	C	D
C1	250mm	250mm	300mm	300mm
C2	150mm	200mm	200mm	200mm + baffle