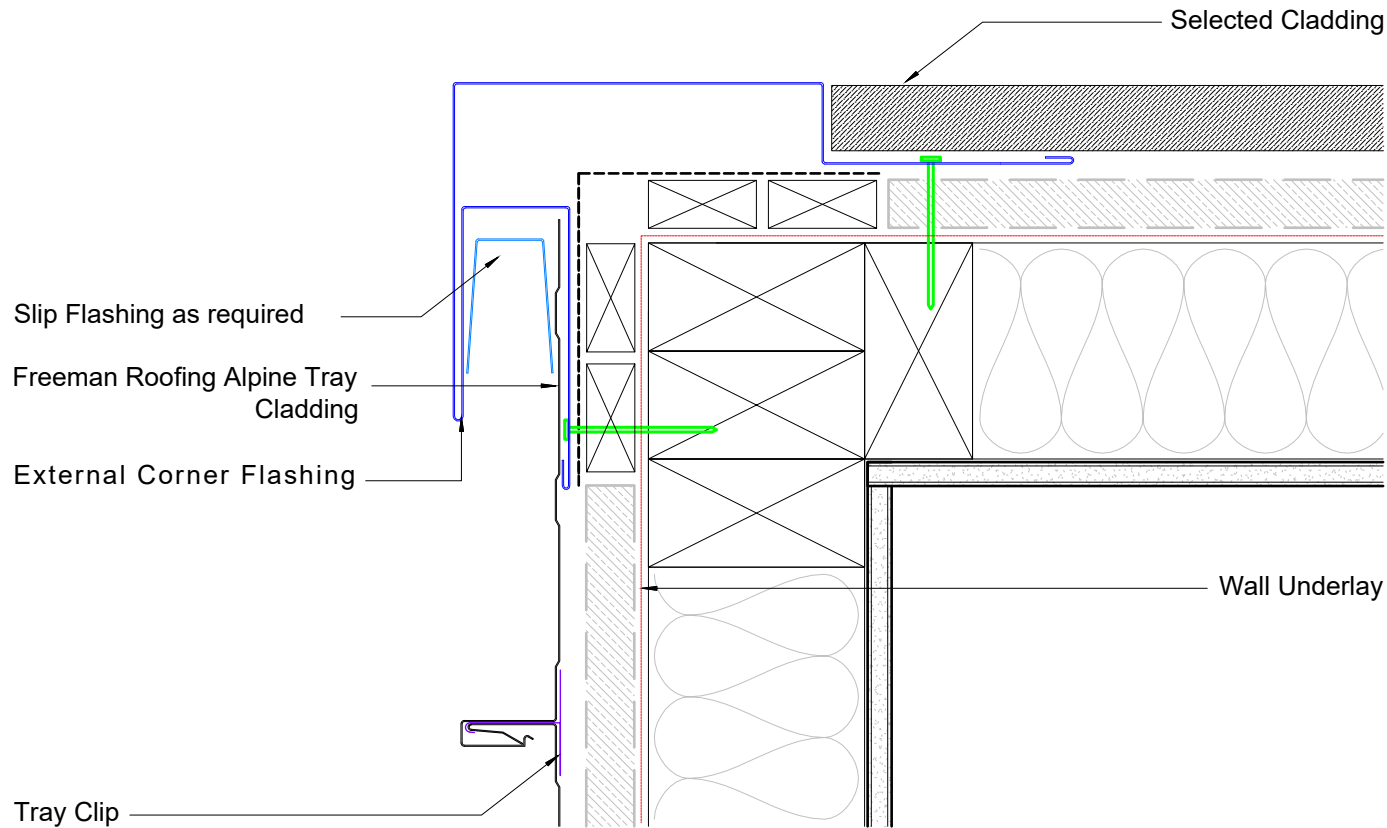


Freeman Roofing Alpine Tray	
0.4mm	Colorsteel® Maxam®
0.55mm	Colorsteel® Maxam®
0.4mm	Zincalume®
0.55mm	Zincalume®



**Notes:**

Building Code Compliance: Flashings must adhere to E2/AS1 requirements, considering various wind zones and building types.

**Design Specifications:**

Cross-Fall: Ensure a minimum of 15° cross-fall for effective drainage.

**Cladding Cover:**

At least 35 mm cover over flashing upstand, 60 mm in higher wind zones.

**Extension Past Openings:**

Flashings should extend a minimum of 20 mm beyond window or door trims.

**Upstands:**

Increased dimensions or hooks/hems may be required in certain wind zones.

**Installation Considerations:**

Ensure proper cover dimensions, overlap, and clearances. Accommodate for thermal and building movement, particularly with rigid flashings.

**Maintenance and Inspection:**

Regular checks are crucial, especially in harsh environments.